

Custom options availability varies depending on the requested customization and quantity. Contact us for details.

Custom harness

Connectors, cable ties, and plastic tubing can be added.



Custom shaft

We also offer custom options such as D-shaped shaft, addition of keyway and through-holes, and mounting of gear and pulley. The shaft can be made a hollow shaft for routing cables and air.

Cog wheel customization



Through-hole customization



Pulley customization

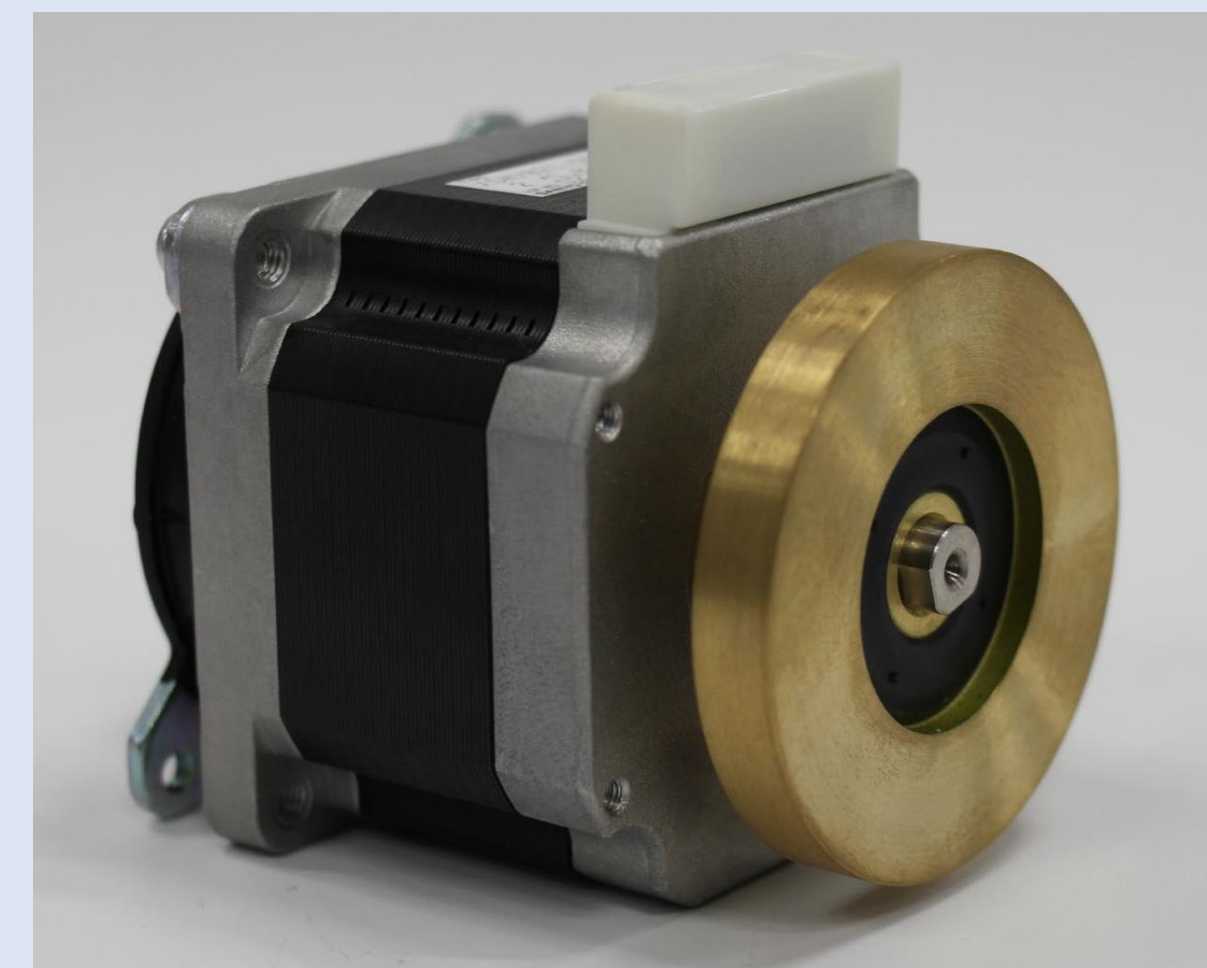


Hollow shaft



Rotary damper and surface mount damper

A damper can be added to reduce vibrations when rotating.



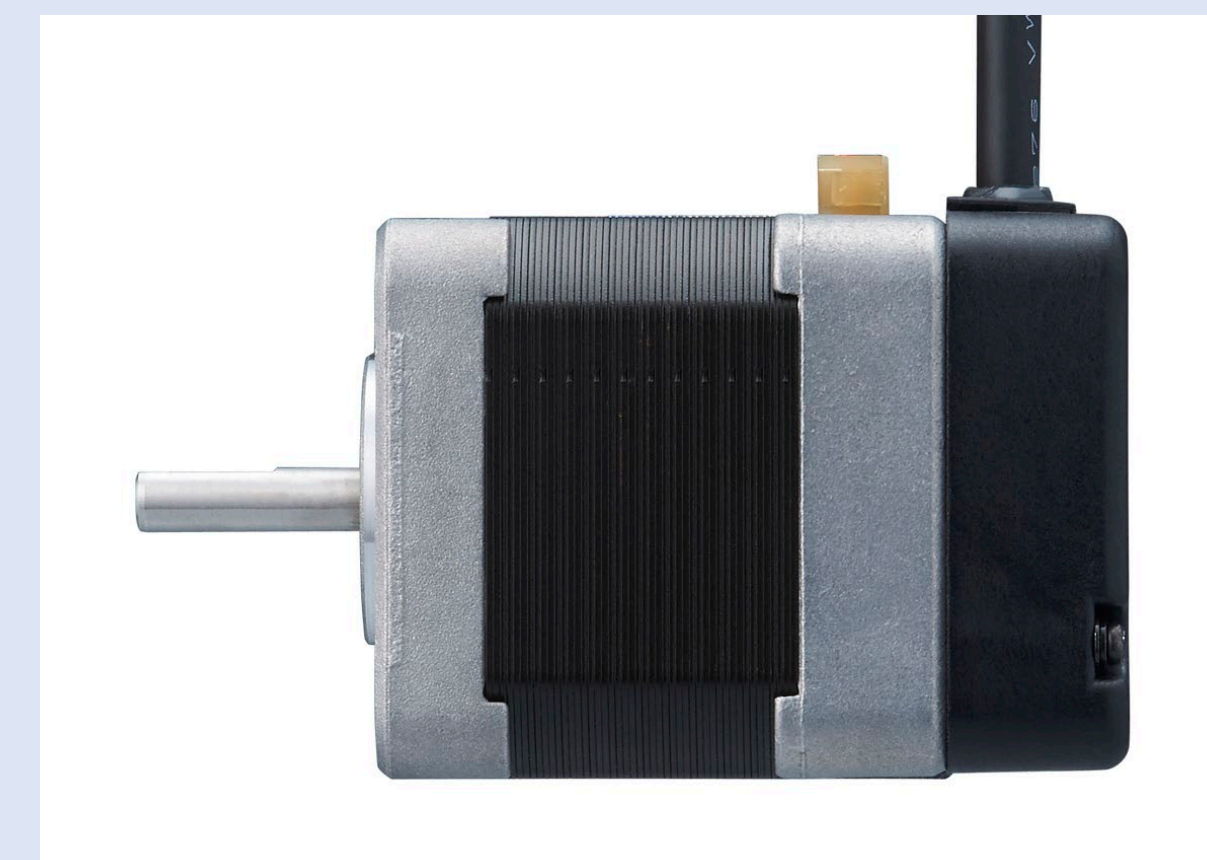
Rotary damper



Surface mount damper

Gears, encoders, and brake

- A gear can be added for applications where a high load torque is exerted at low speeds.
- An encoder can be added for detecting motor position and speed.
- A brake can be added to hold the motor position at rest.



With encoder



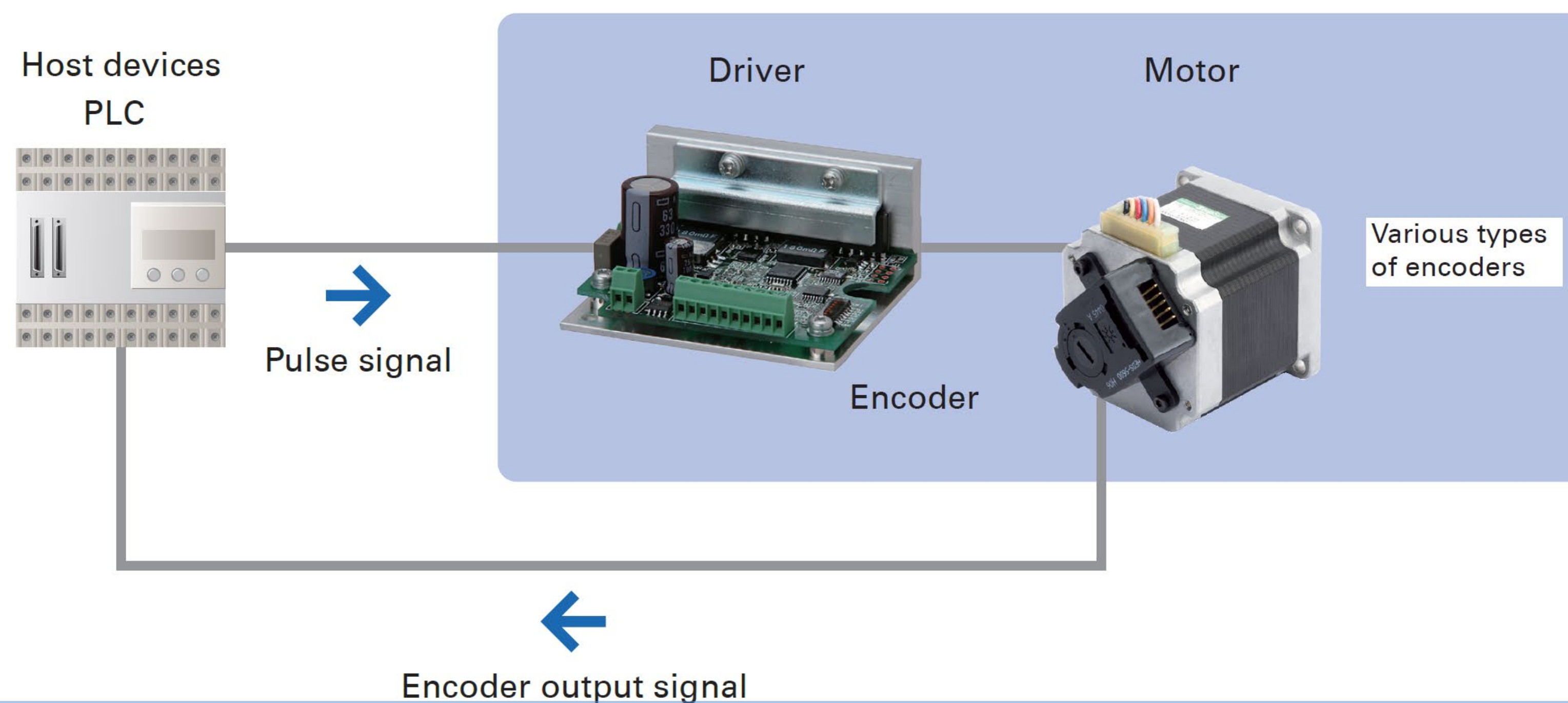
With gear

STEPPING MOTOR with ENCODER

SANYO DENKI *EUROPE SA.***When open-loop control is not enough**

There's a risk of desynchronization or position error...

Stepping systems provide precise positioning with easy control. By adding an encoder to a stepping motor, the controller can monitor the actual position directly, closing the feedback loop and improving the safety and reliability.

**Features****1. Safety: Position verification**

Adding an encoder is an ideal and easy solution for safety-sensitive applications, requiring position verification and position maintenance, such as medical instrumentation.

2. Reliability: Stall Detection

Device reliability is improved with possible detection and reporting of stalls.

3. Closed-loop control with stepper benefit

High-end closed loop control can be achieved while keeping the advantages of stepping motors: stable stop without hunting, higher torque than DC servo motor at low speed over the same size, eliminating the need of gearboxes.

4. Accurate Homing







Encoder with index pulse option can be used to achieve precise homing.

STEPPING MOTOR with ENCODER




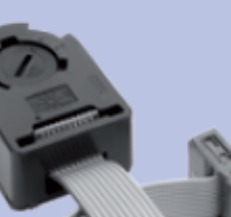
SANYO DENKI *EUROPE SA.*

Product Lineup

Stepping Motors

Basic step angle	Motor size	Holding torque [Nm min.] Model number
1.8°	35 mm sq. 	0.195 to 0.23 2H35□
0.9°	42 mm sq. 	0.23 2P42□
1.8°	42 mm sq. 	0.26 to 0.42 2H42□
1.8°	56 mm sq. 	0.83 to 2 2H56□
1.8°	60 mm sq. 	0.88 to 2.7 2H60□
1.8°	86 mm sq. 	3.3 to 9 2H86□

Incremental Optical Encoders

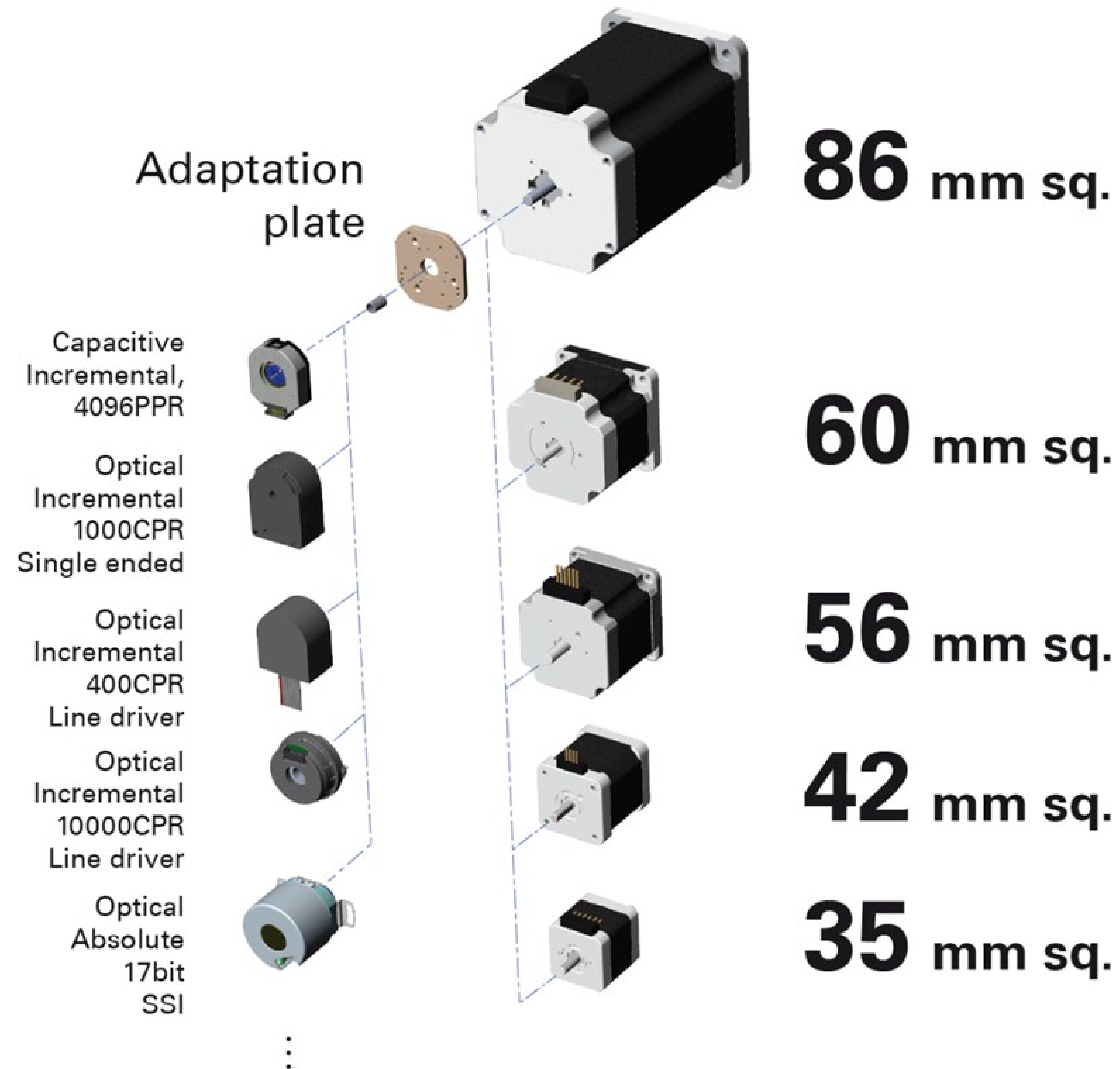
Encoder type	CPR	Index option	Output type	Features
R type 	200		single ended	Compact size Simple interface Cost effective
S type 	400	■	single ended	Medium resolution Pulse index option Simple interface
M type 	1000 1024	■	single ended	High resolution Pulse index option Simple interface
L type 	400		line driver	Noise immunity Transmitting encoder signal over a long distance

Other types of motors and encoders on demand.



STEPPING MOTOR with ENCODER

SANYO DENKI *EUROPE SA.*



Quick Customization Service

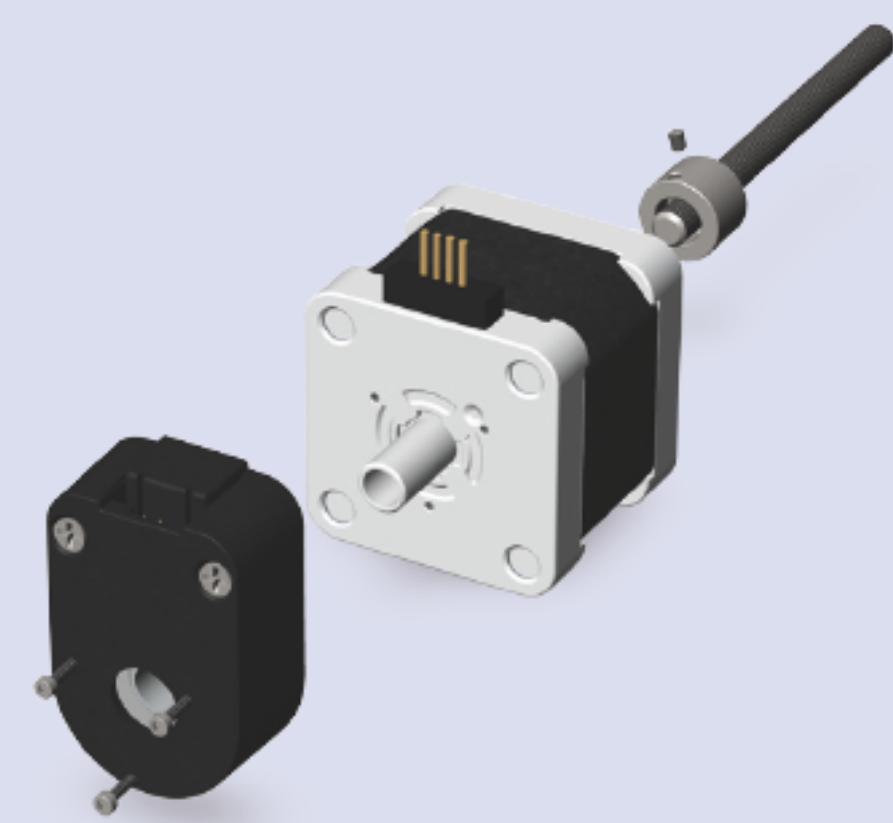
With our extensive experience in designing and manufacturing custom stepping motors with encoder systems, our stepping motors can be easily customized to mount almost any types of encoders thanks to specific adaptation plates.

STEPPING MOTOR with ENCODER

SANYO DENKI *EUROPE SA.*

Application Examples

3D Printing Machine



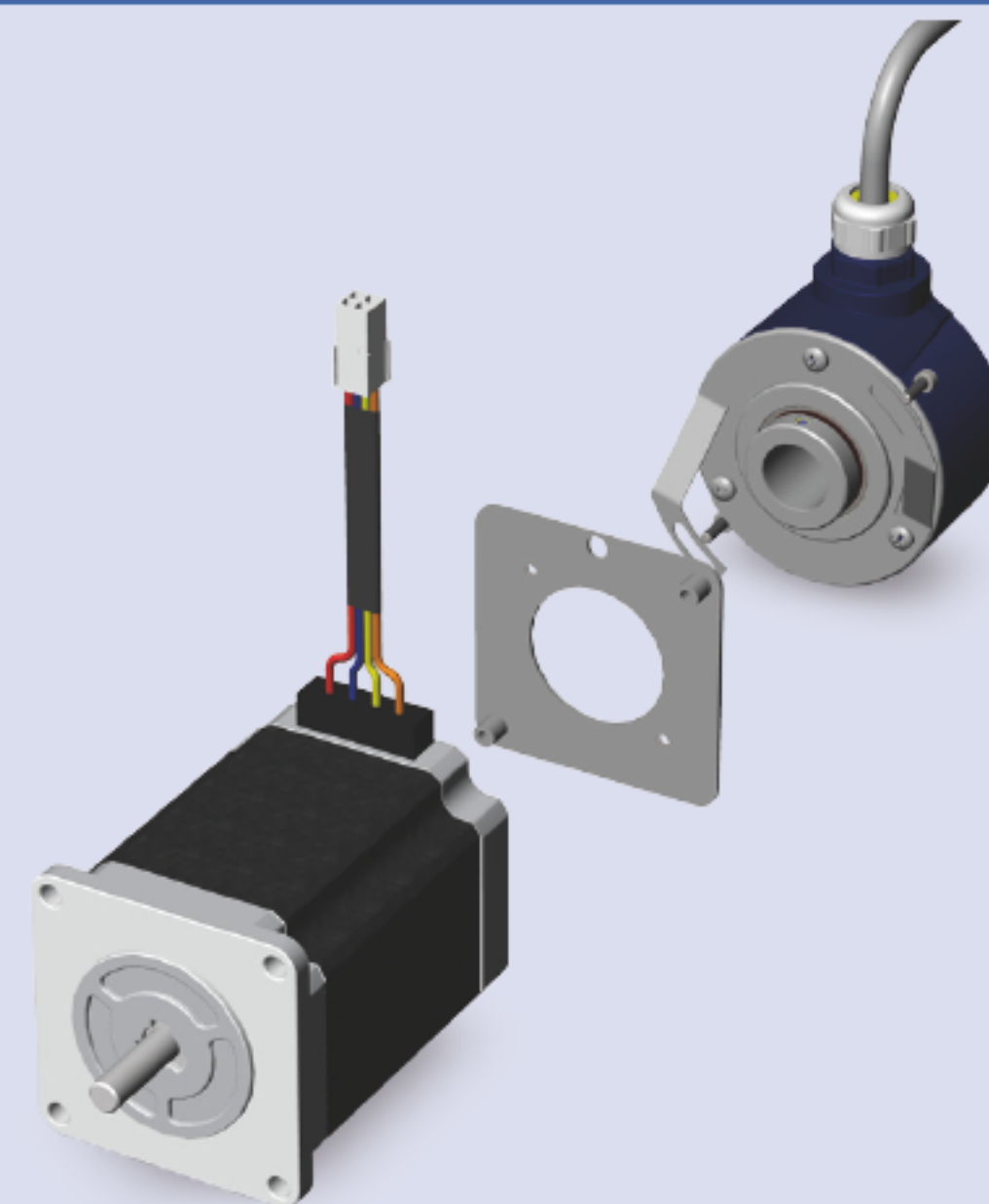
- 42mm sq. hollowshaft
- Non-captive leadscrew
- PTFE coating
- Anti-backlash nut
- Incremental hollowshaft encoder 400CPR

Easy integration and space saving
PTFE coating for high efficiency and long life time



3D Printing

Industrial Application



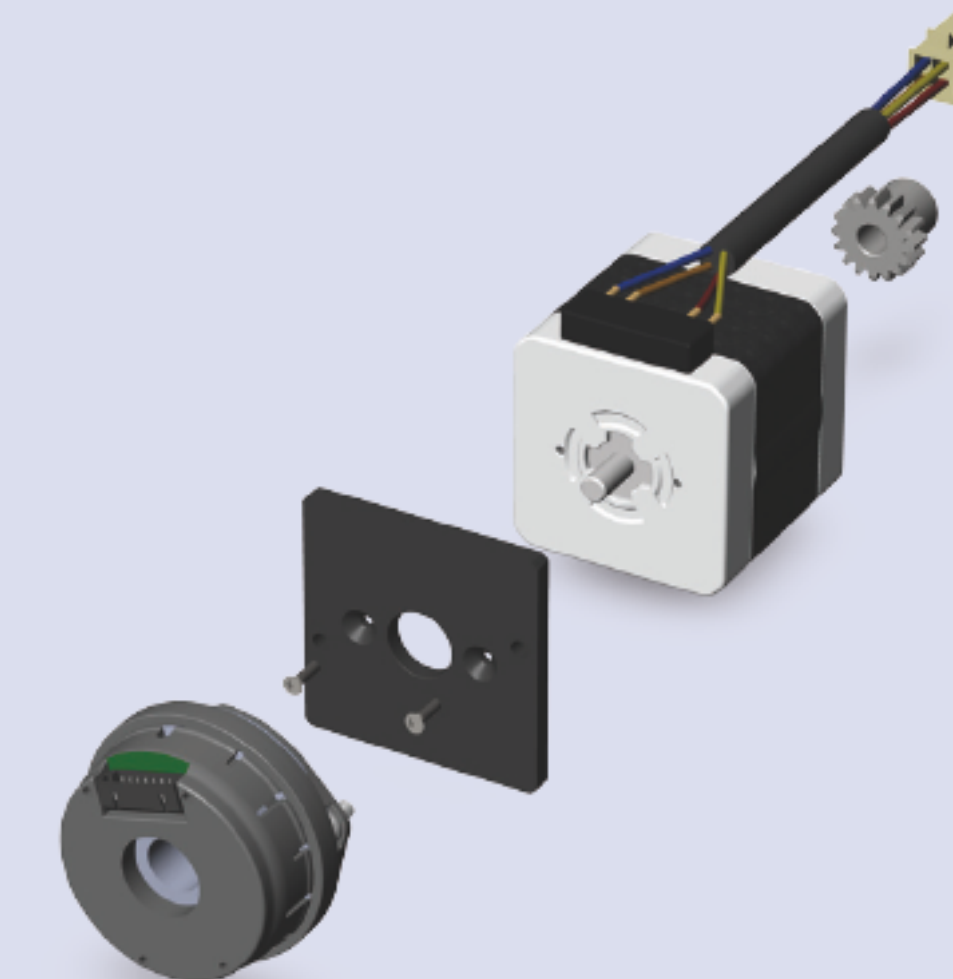
- 56mm sq.
- Customized harness
- Adaptation plate
- Ball bearing encoder
- 12 bit absolute encoder BiSS interface

Ball bearing encoder for robust design
High resolution absolute encoder for accuracy
High design flexibility: motors size, encoder protocols



Industrial machine

Medical Instrumentation

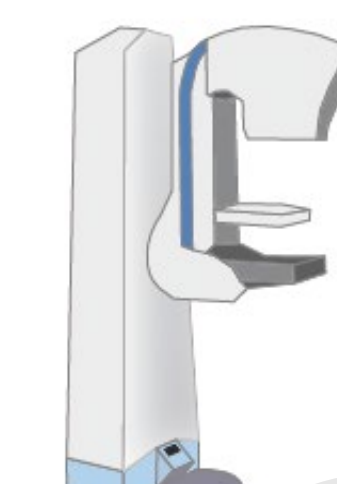


- 35mm sq.
- Pinion gears attached
- Customized harness
- Adaptation plate
- Incremental encoder 10.000CPR

Easy integration, quick sample delivery
Complete solution
High resolution encoder for accuracy and safety



Blood Analyser



Mammograph

STEPPING MOTOR with ENCODER

Features

Lineup

Quick Customization Service

Application Examples

STEPPING MOTOR with LEADSCREW

Linear Actuator

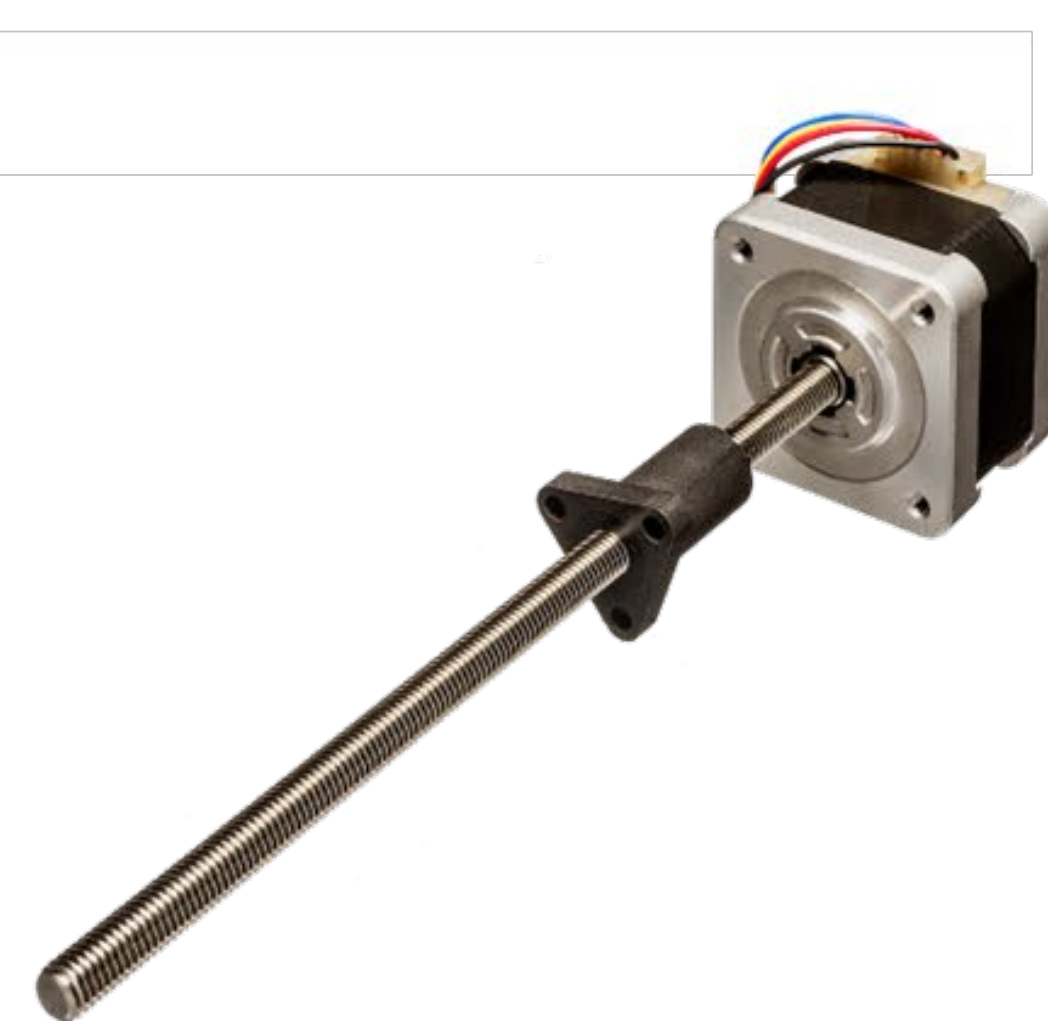
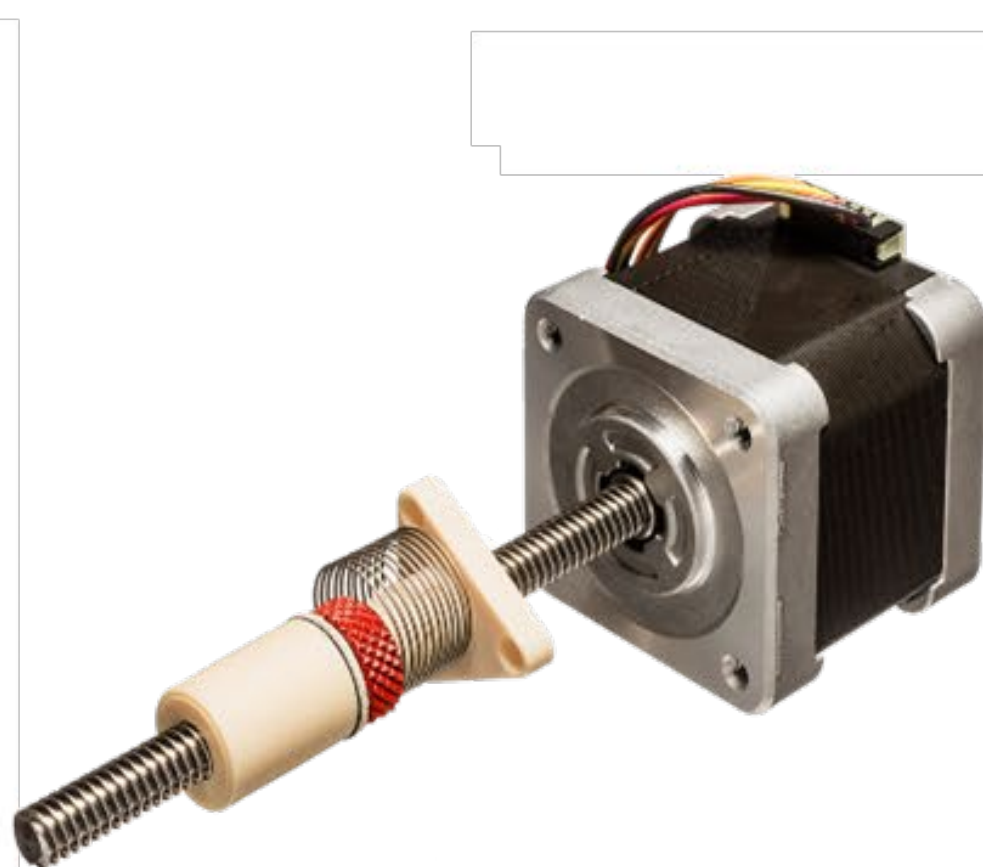
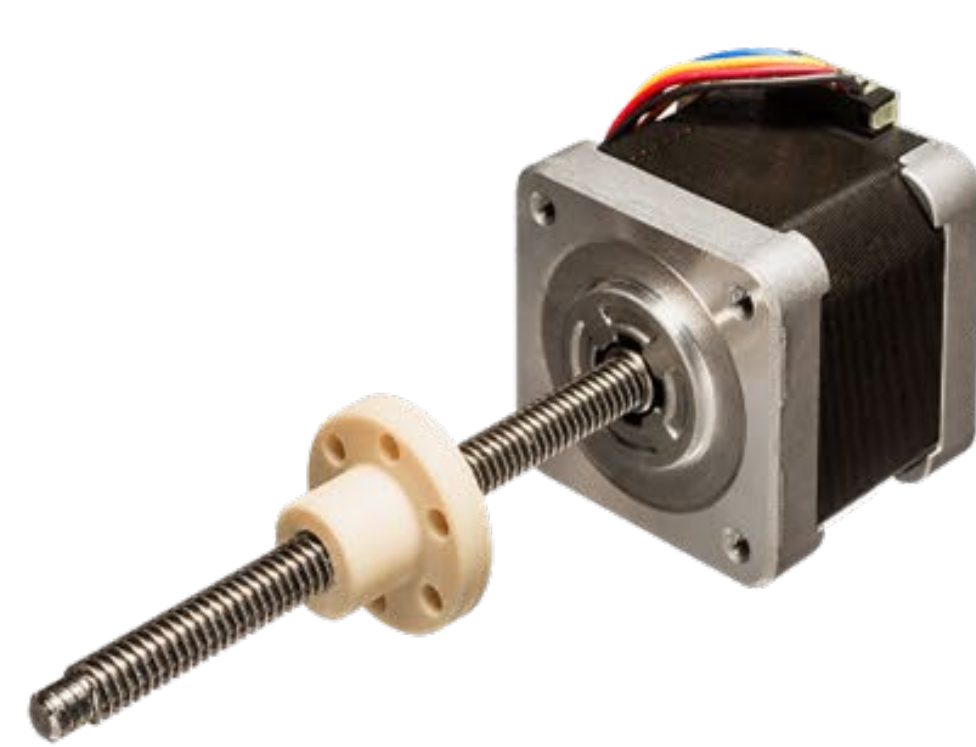
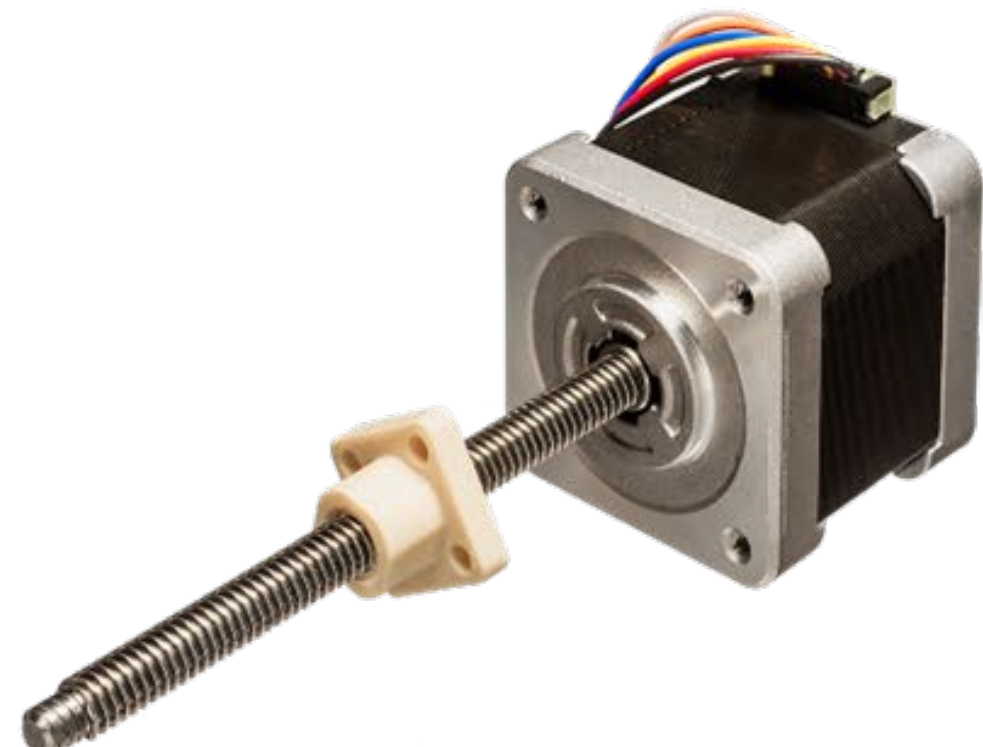
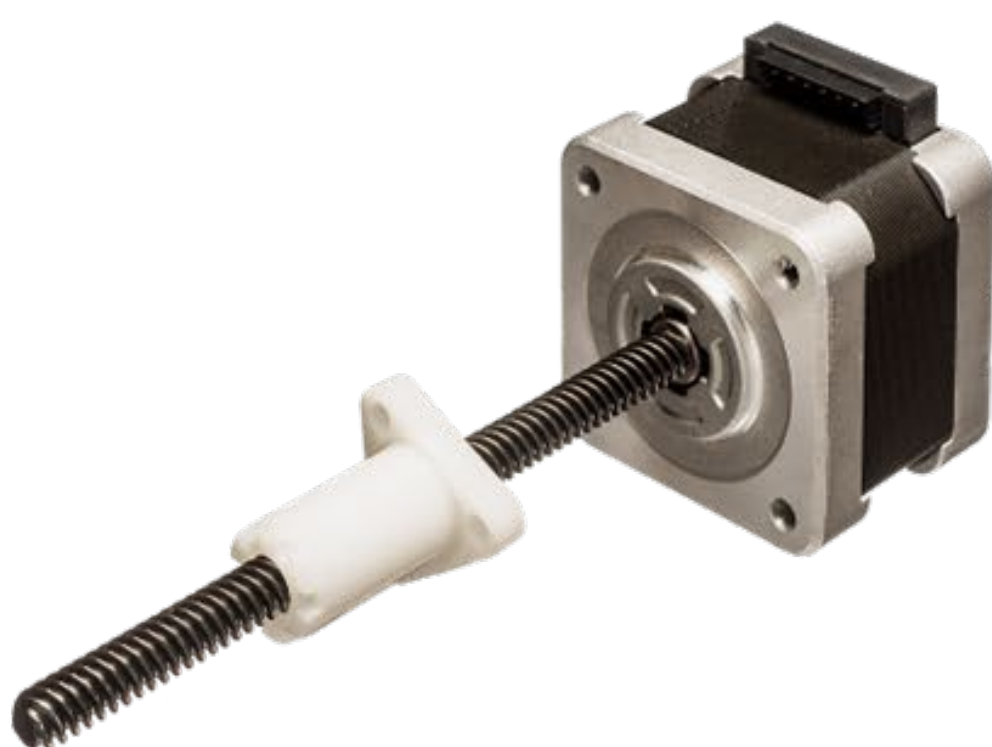
We customize per your need

Movie

STEPPING MOTOR with Actuator

SANYO DENKI *EUROPE SA.*

Linear Actuator



Force



80 N
recommended

Speed

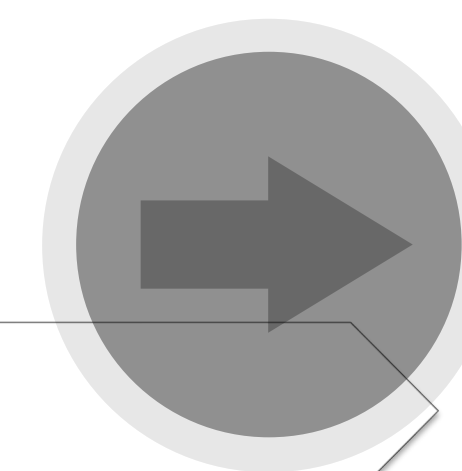
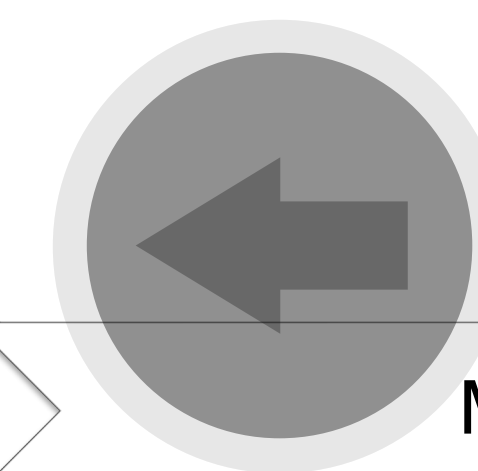


200 mm/s

Stroke



250 mm



STEPPING MOTOR with Actuator

We customize per your need

SANYO DENKI *EUROPE SA.*



A wide range of nuts with or without backlash adjustment

A wide range of screws with many different pitches and TFE coating options.



Non Captive Linear Actuator + Encoder

