

SANMOTION R

AC SERVO SYSTEMS



AC Servo Motor

200 V

275 mm sq. 37 kW

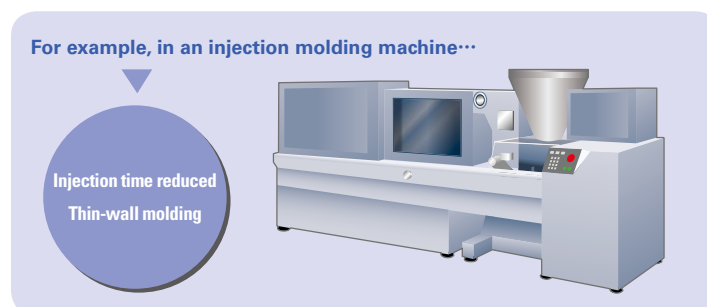
Applications

Injection molding machines, spring forming machines and hydraulic pump systems

Fast Acceleration

Maximum instantaneous torque of 650 N·m is an increase of approximately 11% and instantaneous angular acceleration of 10,660 rad/s² is an increase of approximately 44% over our conventional product.* The motor's high torque enables high acceleration, contributing to reduced device takt time.

For example, in an injection molding machine...



Compact and Light Weight

Total motor length of 553 mm has been decreased by approximately 13% and mass has been decreased by approximately 20% over our conventional product.* This contributes to space saving in devices.

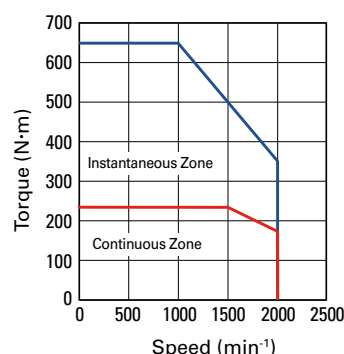
*Our conventional product: P6 Servo Motor Model Number: P60B2837KB

Specifications

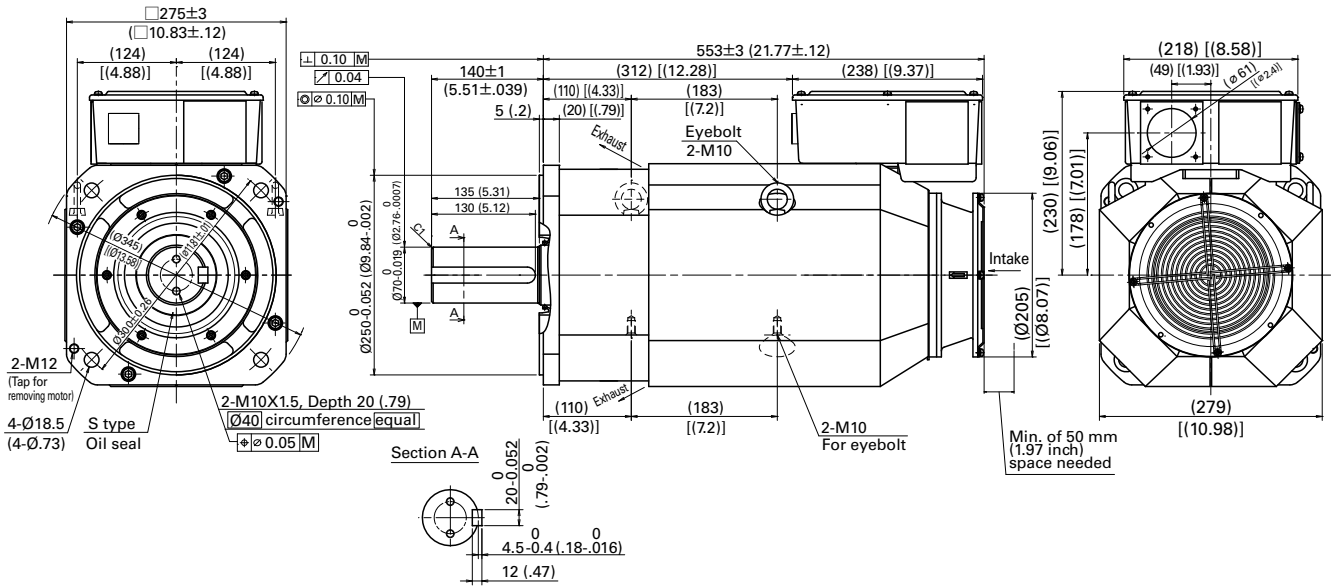
Item	Unit	Specifications
Model No.	—	R2AA2837KB
Rated Output	kW	37
Rated Speed	min ⁻¹	1500
Maximum Speed	min ⁻¹	2000
Rated Torque	N·m	235
Flange Size	mm	275
Mass	kg	132

Compatible servo amplifier: SANMOTION R amplifier capacity 900 A

Speed-Torque Characteristics



Dimensions [Unit : mm (inch)]



Precautions For Adoption

Cautions

Failure to follow the precautions on the right may cause moderate injury and property damage, or in some circumstances, could lead to a serious accident. Always follow all listed precautions.

Cautions

- Read the accompanying Instruction Manual carefully prior to using the product.
- If applying to medical devices and other equipment affecting people's lives, please contact us beforehand and take appropriate safety measures.
- If applying to equipment that can have significant effects on society and the general public, please contact us beforehand.
- Do not use this product in an environment where vibration is present, such as in a moving vehicle or shipping vessel.
- Do not perform any retrofitting, re-engineering, or modification to this equipment.
- The products presented in this catalog are meant to be used for general industrial applications. If using for special applications related to aviation and space, nuclear power, electric power, submarine repeaters, etc., please contact us beforehand.

*For any question or inquiry regarding the above, contact our Sales Department.

SANYO DENKI CO., LTD. 3-33-1, Minami-Otsuka, Toshima-ku, Tokyo, 170-8451, Japan TEL: +81 3 5927 1020 <http://www.sanyodenki.com>

The names of companies and/or their products specified in this catalog are the trade names, and/or trademarks and/or registered trademarks of such respective companies. Specifications are subject to change without notice.

CATALOG NO. S1023B001 '14.10