

# 40mm sq.

## San Ace 40



### General Specifications

- Material ..... Frame: Plastics (Flammability: UL94V-0),  
Impeller: Plastics (Flammability: UL94V-0)
- Expected Life ..... Refer to specifications (L10:Survival rate:90% at 60°C ,  
rated voltage, and continuously run in a free air state)
- Lead Wire ..... Inlet ⊕red ⊖black (Sensor) yellow (Control) brown  
Outlet ⊕orange ⊖gray (Sensor) purple (Control) white
- Storage Temperature ..... -30°C to +70°C (Non-condensing)

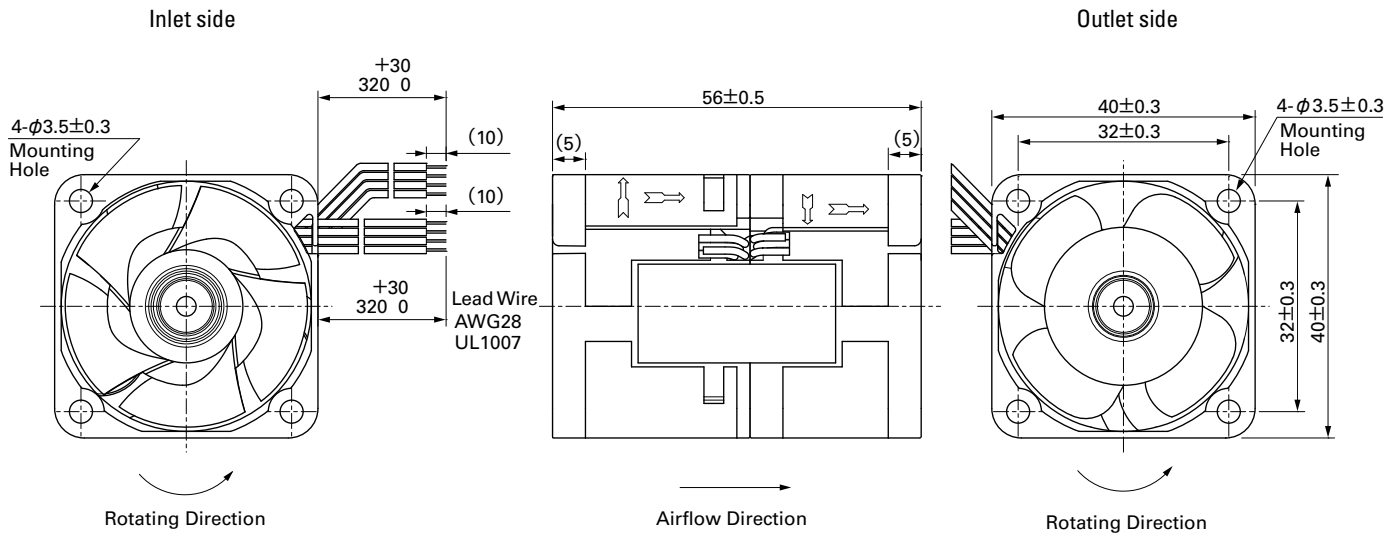
## 40×40×56mm (Mass : 90g) 9CRD type

### Specifications The following nos. have PWM controls and pulse sensors.

Model No.	Rated Voltage [V]	Operating Voltage Range [V]	PWM duty cycle* [%]	Rated Current [A]	Rated Input [W]	Rated Speed [min <sup>-1</sup> ]	Max. Airflow [m <sup>3</sup> /min] [CFM]	Max. Static Pressure [Pa] [inchH <sub>2</sub> O]	SPL [dB(A)]	Operating Temperature [°C]	Expected Life [h]
9CRD0412P5J03	12	10.8 to 13.2	100	1.15	13.8	19,000 12,600	0.87 30.72	630 2.53	61	-20 to +70	40,000/60°C
			0	0.12	1.44	3,700 2,500	0.15 5.30	25 0.10	22		
9CRD0412P5G03			100	0.90	10.8	16,700 11,250	0.77 27.19	500 2.01	58		
			0	0.10	1.2	3,350 2,250	0.13 4.59	21 0.08	21		
9CRD0412P5H03			100	0.60	7.2	15,000 10,000	0.70 24.72	410 1.65	56		
			0	0.09	1.08	3,000 2,000	0.12 4.24	16 0.06	20		
9CRD0412P5M03	100	0.52	6.24	14,000 9,300	0.65 22.95	360 1.45	54				
	0	0.07	0.84	2,000 1,300	0.07 2.47	7 0.03	15				

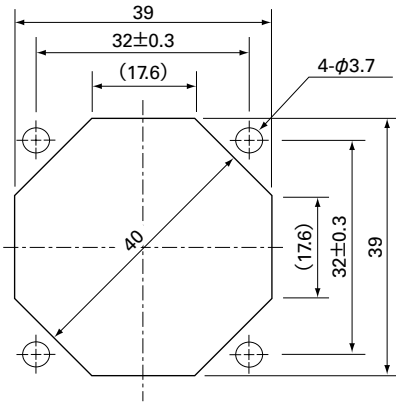
\*PWM Frequency : 25kHz

### Dimensions (unit: mm)



■ Reference Dimensions of Mounting Holes and Vent Opening (unit: mm)

Inlet side, Outlet side

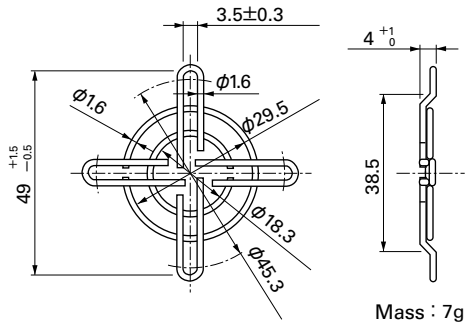


■ Options (unit: mm)

Finger Guards

Model : 109-059      Surface treatment : Nickel-chrome plating (silver)      Color  
 : 109-059H      : Cation electropainting (black)

Inlet side, Outlet side



Mass : 7g

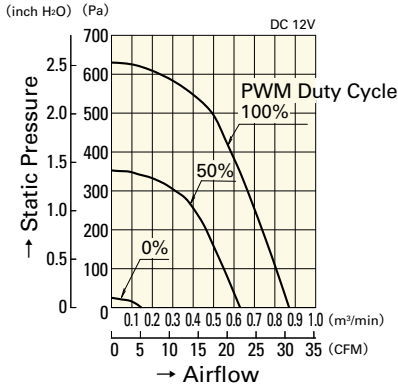
**40**mm sq.

# San Ace 40

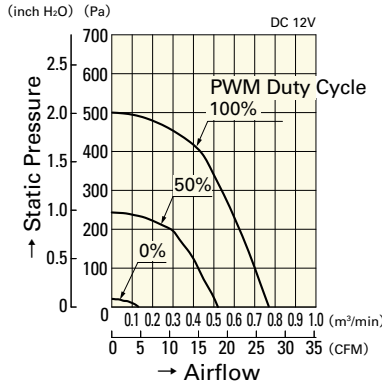
**40×40×56mm** [Mass : 90g]

## Airflow - Static Pressure Characteristics

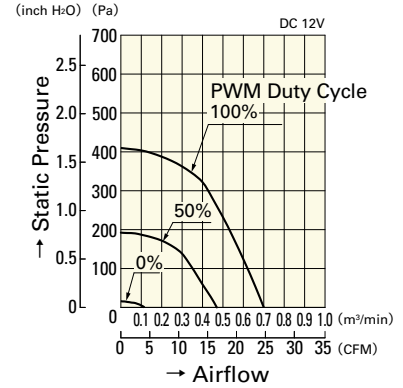
### PWM Duty Cycle



**9CRD0412P5J03**

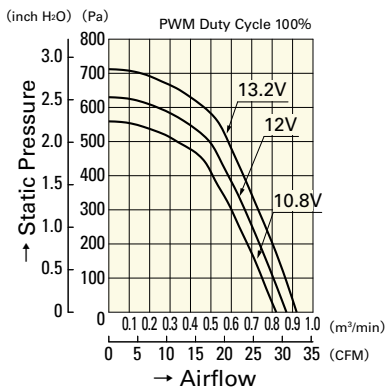


**9CRD0412P5G03**

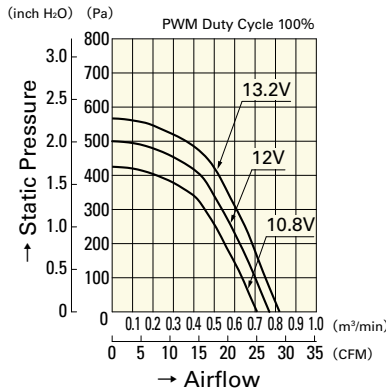


**9CRD0412P5H03**

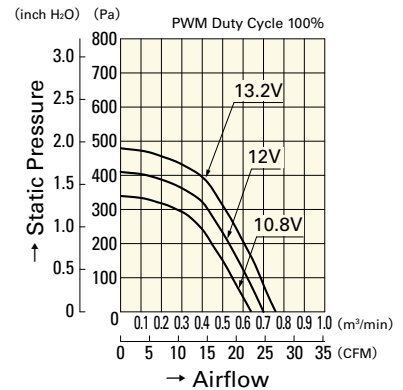
### Operating Voltage Range



**9CRD0412P5J03**

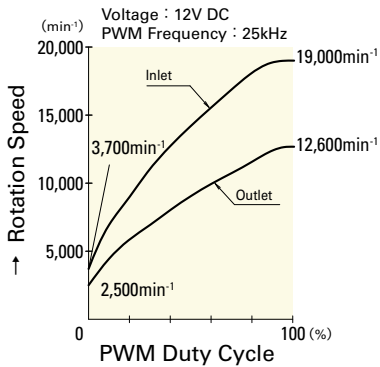


**9CRD0412P5G03**

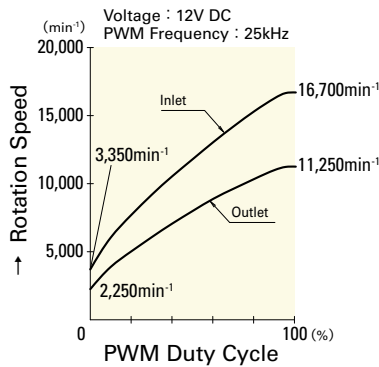


**9CRD0412P5H03**

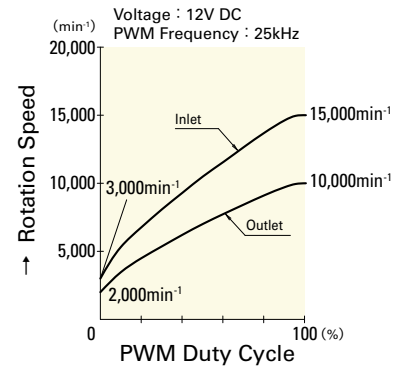
## PWM Duty - Speed Characteristics Example



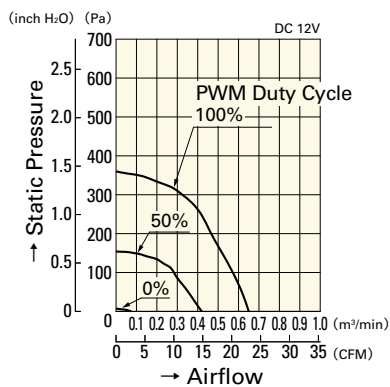
**9CRD0412P5J03**



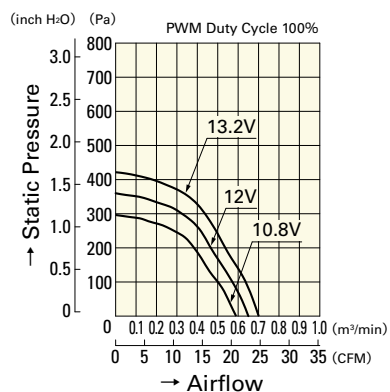
**9CRD0412P5G03**



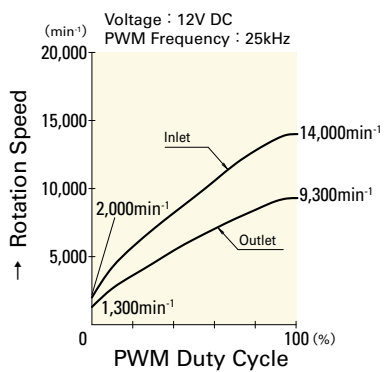
**9CRD0412P5H03**



**9CRD0412P5M03**



**9CRD0412P5M03**



**9CRD0412P5M03**